



### IND-2402

Sample ID: G4A0114-02

Matrix: Industrial Hemp

Test ID: 5023007

Source ID:

Date Sampled: 01/10/24

Date Accepted: 01/10/24

**Jefferson E-Commerce**  
admin@jeffersoncommerce.com

### Results at a Glance

Total CBD : 0.062 %

Total CBG : 0.66 %

Percent Moisture : 6.86 % **PASS**



**ISO 17025**  
ACCREDITED  
LABORATORY

Eric Wendt  
Chief Science Officer - 1/12/2024



### IND-2402

Sample ID: G4A0114-02

Matrix: Industrial Hemp

Test ID: 5023007

Source ID:

Date Sampled: 01/10/24

Date Accepted: 01/10/24

**Jefferson E-Commerce**  
admin@jeffersoncommerce.com

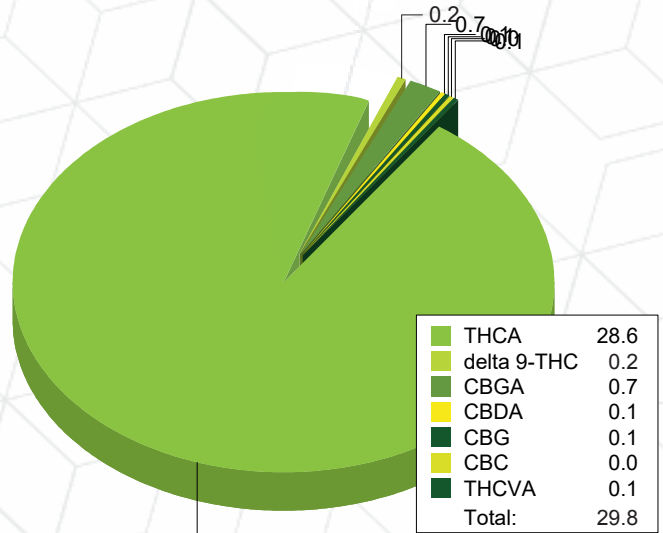
### Potency Analysis

Date/Time Extracted: 01/11/24 13:25

Analysis Method/SOP: 215

Batch Identification: 2402063

	LOQ (%)	% by Wt.	mg/g	Cannabinoids Profile	
Total CBD	0.002	0.062	0.62		
Total CBG	0.0008	0.66	6.6		
THCA	0.003	29	290		
delta 9-THC	0.003	0.19	1.9		
delta 8-THC	0.005	< LOQ	< LOQ		
THCV	0.005	< LOQ	< LOQ		
THCVA	0.002	0.12	1.2		
CBD	0.0005	< LOQ	< LOQ		
CBDA	0.0005	0.071	0.71		
CBDV	0.005	< LOQ	< LOQ		
CBDVA	0.002	< LOQ	< LOQ		
CBN	0.003	< LOQ	< LOQ		
CBG	0.0008	0.082	0.82		
CBGA	0.0008	0.66	6.6		
CBC	0.010	0.048	0.48		



### Moisture

Date/Time Extracted: 01/11/24 14:20

Analysis Method/SOP: 103

Moisture: 6.86 %

Action Level: 90%

Potency results are reported on a dry weight basis.

Total THC = delta 9-THC + (THCA \* 0.877)

Total CBD = CBD + (CBDA \* 0.877)

Total CBG = CBG + (CBGA \* 0.878)

LOQ=Limit of Quantification, the lowest measurable concentration of an analyte.

THCA, delta 9-THC, delta 8-THC, CBDA and CBD are accredited by TNI 2016 and ISO 17025



**ISO 17025**  
ACCREDITED  
LABORATORY

Eric Wendt  
Chief Science Officer - 1/12/2024

These results relate only to the sample included on this report. The report may not be reproduced except in full, without the written permission of Green Leaf Lab.

This is for informational testing and is not compliance testing. Lab results apply to the sample as received.



### Quality Control Potency

Batch: 2402063 - 215-Hemp

Blank(2402063-BLK1)							
Analyte	Result	LOQ	Units	%Recovery Limits	Extracted	Analyzed	Notes
THCA	< LOQ	0.0005	%		01/11/24 13:25	01/11/24 19:58	
delta 9-THC	< LOQ	0.0005	%		01/11/24 13:25	01/11/24 19:58	
delta 8-THC	< LOQ	0.004	%		01/11/24 13:25	01/11/24 19:58	
THCV	< LOQ	0.005	%		01/11/24 13:25	01/11/24 19:58	
THCVA	< LOQ	0.002	%		01/11/24 13:25	01/11/24 19:58	
CBD	< LOQ	0.0005	%		01/11/24 13:25	01/11/24 19:58	
CBDA	< LOQ	0.0005	%		01/11/24 13:25	01/11/24 19:58	
CBDV	< LOQ	0.005	%		01/11/24 13:25	01/11/24 19:58	
CBDVA	< LOQ	0.002	%		01/11/24 13:25	01/11/24 19:58	
CBN	< LOQ	0.003	%		01/11/24 13:25	01/11/24 19:58	
CBG	< LOQ	0.0008	%		01/11/24 13:25	01/11/24 19:58	
CBGA	< LOQ	0.0008	%		01/11/24 13:25	01/11/24 19:58	
CBC	< LOQ	0.009	%		01/11/24 13:25	01/11/24 19:58	

Reference(2402063-SRM1)							
Analyte	% Recovery	LOQ	Units	%Recovery Limits	Extracted	Analyzed	Notes
THCA	93.6	0.0005	%	90-110	01/11/24 13:25	01/11/24 20:21	
delta 9-THC	91.8	0.0005	%	90-110	01/11/24 13:25	01/11/24 20:21	
delta 8-THC	104	0.004	%	90-110	01/11/24 13:25	01/11/24 20:21	
CBD	101	0.0005	%	90-110	01/11/24 13:25	01/11/24 20:21	
CBDA	90.1	0.0005	%	90-110	01/11/24 13:25	01/11/24 20:21	

### Moisture Content

Batch: 2402062 - 103

Blank(2402062-BLK1)							
Analyte	Result	LOQ	Units	%Recovery Limits	Extracted	Analyzed	Notes
Percent Moisture	0.280		%		01/11/24 14:20	01/11/24 14:20	

Blank(2402062-BLK2)							
Analyte	Result	LOQ	Units	%Recovery Limits	Extracted	Analyzed	Notes
Percent Moisture	0.280		%		01/11/24 14:20	01/11/24 14:20	

Reference(2402062-SRM1)							
Analyte	% Recovery	LOQ	Units	%Recovery Limits	Extracted	Analyzed	Notes
Percent Moisture	83.9		%	80-120	01/11/24 14:20	01/11/24 14:20	

Reference(2402062-SRM2)							
Analyte	% Recovery	LOQ	Units	%Recovery Limits	Extracted	Analyzed	Notes
Percent Moisture	92.4		%	80-120	01/11/24 14:20	01/11/24 14:20	



Eric Wendt  
Chief Science Officer - 1/12/2024



### Notes and Definitions

Regulatory Compliance samples were collected onsite at facility according to SOP-402 and SOP-403 and following Sampling Plan FN117. Quality Control samples were tested as received. Results do not include uncertainty of measurements. Available upon request.

- ATM Non-cannabis matrix related interference or suppression of Internal standard
  - BLI Baseline Interference - Cannabinoid peak interference in chromatographic baseline affecting QC recovery .
  - BLK Analyte detected in method blank, but not associated samples.
  - BSH Blank Spike High - Blank Spike recovery above method limit. no detections in samples.
  - BSL Blank Spike Low - Blank Spike recovery below lower method limit, analyte chromatography reviewed manually for all samples.
  - CBD Interference due to co-elution
  - CV1 CBD matrix interference on GC Pest chromatography
  - CV2 CCV was above acceptance criteria, Non-detect samples are considered acceptable.
  - INF CCV was below acceptance criteria, sample still exceeds regulatory limit.
  - ISH One or more QC falls outside acceptance criteria. Data entered into LIMS for informational purposes only.
  - ISL Internal Standard concentration is above acceptance criteria.
  - MSH Internal Standard concentration is below acceptance criteria.
  - MSI Matrix Spike High - Matrix Spike recovery above method limits.
  - MSL Matrix Spike Interference - Matrix spike source sample contains analyte hit above calibration affecting recovery accuracy in Matrix Spike.
  - TPP
  - U Matrix Spike Low - Matrix Spike recovery below lower method limit, analyte chromatography reviewed manually for all samples.
- Internal Standard concentration outside control limit due to matrix interference



Eric Wendt  
Chief Science Officer - 1/12/2024

These results relate only to the sample included on this report. The report may not be reproduced except in full, without the written permission of Green Leaf Lab.

This is for informational testing and is not compliance testing. Lab results apply to the sample as received.