



GH-2420

Sample ID: G4B0378-03

Matrix: Industrial Hemp

Test ID: 5023962

Source ID:

Date Sampled: 02/26/24

Date Accepted: 02/26/24

Jefferson E-Commerce
rebekah@roguecloud.com

Results at a Glance

Total CBD : 0.057 %

Total CBG : 0.65 %

THCA : 17 % dry **PASS**

Percent Moisture : 12.0 % **PASS**



Nolan Mundie
Lab Director - 2/28/2024



GH-2420

Sample ID: G4B0378-03

Matrix: Industrial Hemp

Test ID: 5023962

Source ID:

Date Sampled: 02/26/24

Date Accepted: 02/26/24

Jefferson E-Commerce
rebekah@roguecloud.com

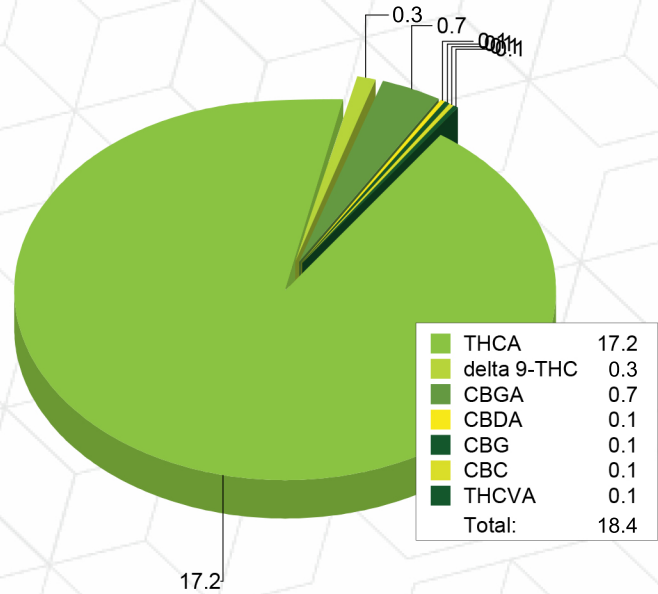
Potency Analysis

Date/Time Extracted: 02/27/24 13:29

Analysis Method/SOP: 215

Batch Identification: 2409021

	LOQ (%)	% by Wt.	mg/g	Cannabinoids Profile	
Total CBD	0.002	0.057	0.57		
Total CBG	0.0009	0.65	6.5		
THCA	0.002	17	170		
delta 9-THC	0.002	0.25	2.5		
delta 8-THC	0.005	< LOQ	< LOQ		
THCV	0.006	< LOQ	< LOQ		
THCVA	0.002	0.054	0.54		
CBD	0.0006	< LOQ	< LOQ		
CBDA	0.0006	0.065	0.65		
CBDV	0.006	< LOQ	< LOQ		
CBDVA	0.002	< LOQ	< LOQ		
CBN	0.003	< LOQ	< LOQ		
CBG	0.0009	0.057	0.57		
CBGA	0.0009	0.68	6.8		
CBC	0.010	0.052	0.52		



Moisture

Date/Time Extracted: 02/27/24 14:55

Analysis Method/SOP: 103

Moisture: 12.0 %

Action Level: 90%

Potency results are reported on a dry weight basis.

Total THC = delta 9-THC + (THCA * 0.877)

Total CBD = CBD + (CBDA * 0.877)

Total CBG = CBG + (CBGA * 0.878)

LOQ=Limit of Quantification, the lowest measurable concentration of an analyte.

THCA, delta 9-THC, delta 8-THC, CBDA and CBD are accredited by TNI 2016 and ISO 17025



Nolan Mundie
Lab Director - 2/28/2024

These results relate only to the sample included on this report. The report may not be reproduced except in full, without the written permission of Green Leaf Lab.

This is for informational testing and is not compliance testing. Lab results apply to the sample as received.



Quality Control Potency

Batch: 2409021 - 215-Hemp

Blank(2409021-BLK1)							
Analyte	Result	LOQ	Units	%Recovery Limits	Extracted	Analyzed	Notes
THCA	< LOQ	0.0005	%		02/27/24 13:29	02/28/24 00:37	
delta 9-THC	< LOQ	0.0005	%		02/27/24 13:29	02/28/24 00:37	
delta 8-THC	< LOQ	0.004	%		02/27/24 13:29	02/28/24 00:37	
THCV	< LOQ	0.005	%		02/27/24 13:29	02/28/24 00:37	
THCVA	< LOQ	0.002	%		02/27/24 13:29	02/28/24 00:37	
CBD	< LOQ	0.0005	%		02/27/24 13:29	02/28/24 00:37	
CBDA	< LOQ	0.0005	%		02/27/24 13:29	02/28/24 00:37	
CBDV	< LOQ	0.005	%		02/27/24 13:29	02/28/24 00:37	
CBDVA	< LOQ	0.002	%		02/27/24 13:29	02/28/24 00:37	
CBN	< LOQ	0.003	%		02/27/24 13:29	02/28/24 00:37	
CBG	< LOQ	0.0008	%		02/27/24 13:29	02/28/24 00:37	
CBGA	< LOQ	0.0008	%		02/27/24 13:29	02/28/24 00:37	
CBC	< LOQ	0.009	%		02/27/24 13:29	02/28/24 00:37	

Reference(2409021-SRM1)							
Analyte	% Recovery	LOQ	Units	%Recovery Limits	Extracted	Analyzed	Notes
THCA	92.9	0.0005	%	90-110	02/27/24 13:29	02/28/24 01:00	
delta 9-THC	96.5	0.0005	%	90-110	02/27/24 13:29	02/28/24 01:00	
delta 8-THC	106	0.004	%	90-110	02/27/24 13:29	02/28/24 01:00	
CBD	110	0.0005	%	90-110	02/27/24 13:29	02/28/24 01:00	
CBDA	96.4	0.0005	%	90-110	02/27/24 13:29	02/28/24 01:00	

Moisture Content

Batch: 2409009 - 103

Blank(2409009-BLK1)							
Analyte	Result	LOQ	Units	%Recovery Limits	Extracted	Analyzed	Notes
Percent Moisture	0.400		%		02/27/24 14:55	02/27/24 14:55	

Blank(2409009-BLK2)							
Analyte	Result	LOQ	Units	%Recovery Limits	Extracted	Analyzed	Notes
Percent Moisture	0.480		%		02/27/24 14:55	02/27/24 14:55	

Reference(2409009-SRM1)							
Analyte	% Recovery	LOQ	Units	%Recovery Limits	Extracted	Analyzed	Notes
Percent Moisture	89.4		%	80-120	02/27/24 14:55	02/27/24 14:55	

Reference(2409009-SRM2)							
Analyte	% Recovery	LOQ	Units	%Recovery Limits	Extracted	Analyzed	Notes
Percent Moisture	95.4		%	80-120	02/27/24 14:55	02/27/24 14:55	



Nolan Mundie
Lab Director - 2/28/2024



Notes and Definitions

Regulatory Compliance samples were collected onsite at facility according to SOP-402 and SOP-403 and following Sampling Plan FN117. Quality Control samples were tested as received. Results do not include uncertainty of measurements. Available upon request.

- ATM Non-cannabis matrix related interference or suppression of Internal standard
- BLI Baseline Interference - Cannabinoid peak interference in chromatographic baseline affecting QC recovery .
- BLK Analyte detected in method blank, but not associated samples.
- BSH Blank Spike High - Blank Spike recovery above method limit. no detections in samples.
- BSL Blank Spike Low - Blank Spike recovery below lower method limit, analyte chromatography reviewed manually for all samples.
- CBD Interference due to co-elution
- CV1 CBD matrix interference on GC Pest chromatography
- CV2 CCV was above acceptance criteria, Non-detect samples are considered acceptable.
- INF CCV was below acceptance criteria, sample still exceeds regulatory limit.
- ISH One or more QC falls outside acceptance criteria. Data entered into LIMS for informational purposes only.
- ISL Internal Standard concentration is above acceptance criteria.
- MSH Internal Standard concentration is below acceptance criteria.
- MSI Matrix Spike High - Matrix Spike recovery above method limits.
- MSL Matrix Spike Interference - Matrix spike source sample contains analyte hit above calibration affecting recovery accuracy in Matrix Spike.
- TPP
- U Matrix Spike Low - Matrix Spike recovery below lower method limit, analyte chromatography reviewed manually for all samples.
Internal Standard concentration outside control limit due to matrix interference



Nolan Mundie
Lab Director - 2/28/2024

These results relate only to the sample included on this report. The report may not be reproduced except in full, without the written permission of Green Leaf Lab.

This is for informational testing and is not compliance testing. Lab results apply to the sample as received.